



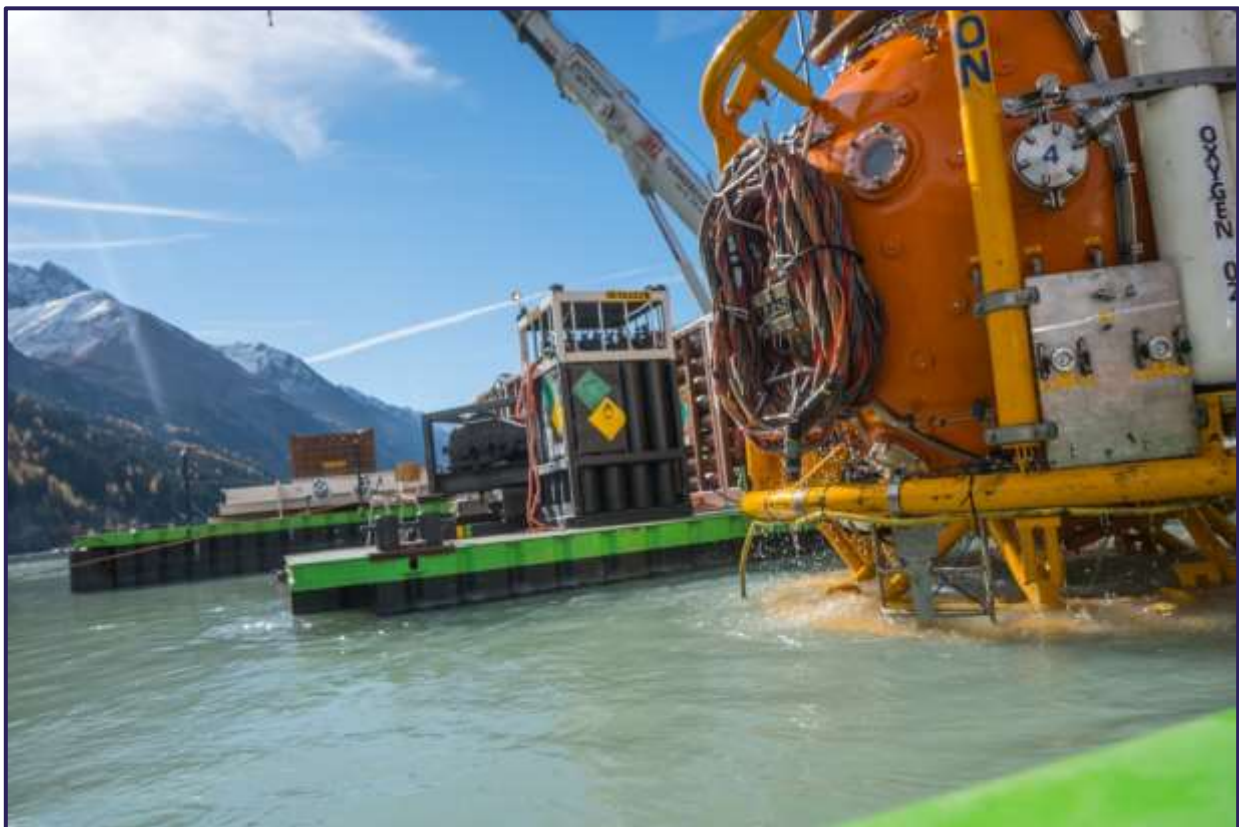
General Information	
Manufactured by	DCN Diving
In operation with DCN	2009, Fully refurbished / full upgrade in Q1 2017
Design Standards	Certified by Lloyds Register Lloyds Register Design Code IMCA D018 / D024
Operating Depth	Currently certified for 200msw Split level possibility
Launch Direction	Moonpool or side launched
Capacity	8 man
TUP Diving	Alternatively the system can be used for TUP diving
Hyperbaric Rescue Chamber	Self-contained Tilted Launch System including life support package
Sea-fastening	Dedicated grillage included
Fire frightening	External / internal deluge / firefighting systems
Planned Maintenance	DiveCert / IMCA D018

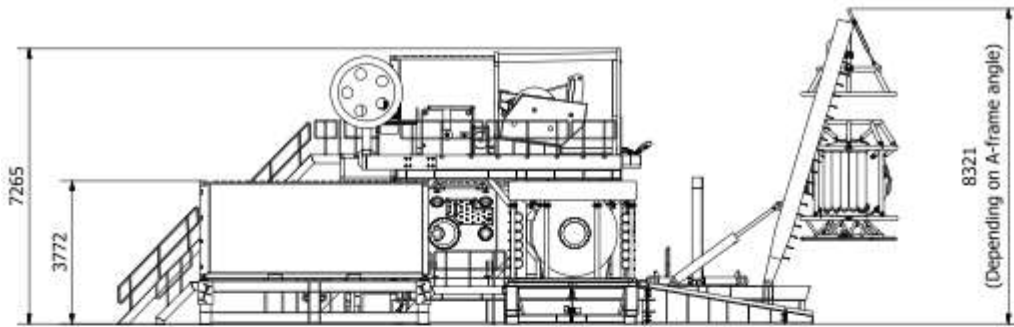
Dimensions / Requirements	
Electrical Requirements	440 - 460V / 60Hz / 630Amp + redundant supply
Dimensions	Refer to sketches included
Offshore Lifting	Setup in compliance with offshore rules
Weights	65T LARS + main chamber + TUP + winch skid + ramp 14T Bell + standoff + clump 22T Dive control + machinery container + standoff frames 11T Reclaim container + standoff frame 12T Hyperbaric rescue chamber 15T Umbilical winch + umbilical
Launch and Recovery System	Integrated above main chamber and forming one structural part with base frame / grillage
	Hydraulically stabilized cursor system
	Remote control / dedicate control forward of winch skid
	Main Winch, Norson self-reeving including redundant HP
	Clump Weight Winch, Comex hydraulic powered
	Wire counters for main-wire and clump wire
	Emergency recovery via integral air winch.
	Power sheave for umbilical handling



Closed Dive Bell	Volume of 4.9m3
	Side trunk docking with TUP system
	50 meter excursion and 55m standby umbilical
	Reclaim diver helmets for working divers.
	72h life support including emergency onboard gas supplies, onboard oxygen make up system, onboard carbon dioxide scrubbers and bell heater
	Internal / external CCTV, lightening and 2way voice comms.
TUP Chamber	Integrated into LARS Frame
	Side docking diving bell
	Vertical chamber allows divers to undress easily
	Shower, washing, toilet facility and sanitary system
	600mm equipment lock
	Third 600mm trunk available for additional chamber
	CCTV, lightening and 2way voice comms.
	Sound powered phone
Main Chamber	2.2 meter diameter
	4man accommodation
	CCTV monitoring
	Medical/Food lock
	Built in breathing system (BIBS)
	CCTV, lightening and 2way voice comms.
	Sound powered phone
SAT and Dive Control	3 Man bell control panel
	3 Diver surface air / mixed gas dive panel
	Split panels for SAT and dive control
	Diver gas reclaim control panel
	Amron mixed gas communications system (Unscrambles)
	Electrics, analysers, hot water temp monitoring, carbon dioxide and oxygen analysis of divers gases
	Clear comm systems (deck, bridge, rov, etc.)
	Digital Edge Inspection / recording system + additional 16channel black box recording system
Life Support Unit (Reclaim Unit)	Electric main distribution system
	Dual diver hot water unit (100% redundancy)
	Gas reclaim (working depth depending but on average 80% efficiency)

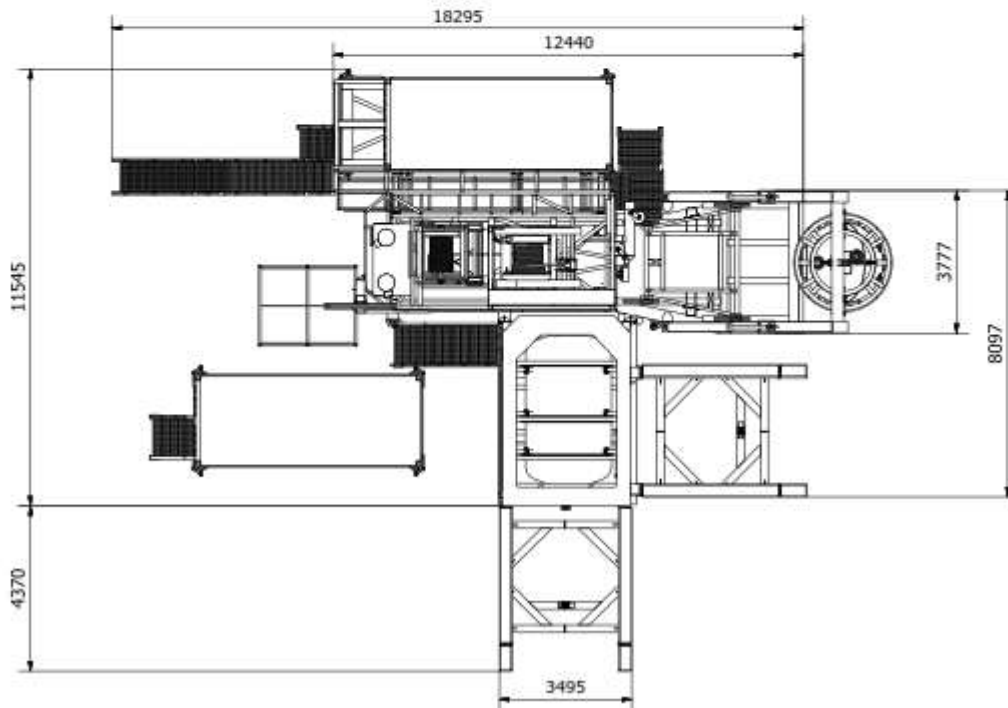
Life Support Unit (Chiller Unit)	Electric emergency distribution system
	Chamber potable water unit (hot/cold)
	Environmental control unit (100% redundancy)
Bell Winch / Umbilical	200m Length
	Standard Fibron Courtland bell umbilical
	The Hydraulic self-reeving umbilical winch
	Dedicated HPU
Hyperbaric Rescue Unit	Designed for 15 man capacity
	services as living chamber in proposed configuration
	Integrated hospital facilities
	72hrs life support (gas + battery power)
	BIBS complete with dump, carbon dioxide scrubbers
Dedicated life support package incl. gas quads and treatment mix	
Additional Equipment	Emergency generator
	Compressor container with primary and back up air supplies
	HP Gas storage quads / Kelly's
	Tooling / equipment container
	Additional living chamber





RIGHT VIEW

SCALE: 1 : 100



TOP VIEW

SCALE: 1 : 100